

Operator field report:
Mr. Torsten Diederich, MD
General practitioner, GP

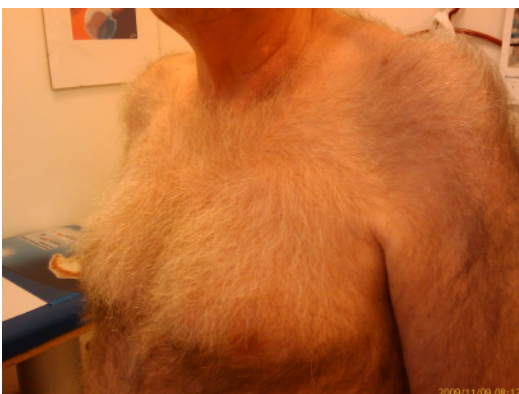


Doctor Diederich is operating the DDC digital Diagnostic Center, the MESA modular Software platform for cardiovascular function diagnosis. Beside other MESA-Systems Doctor Diederich utilizes the CARDIAX PC-ECG with integrated ERGOSOFT stress ECG management program. For 12 Channel ECG leads the Electrode suction system APPLICARD 2.0 is under operation.

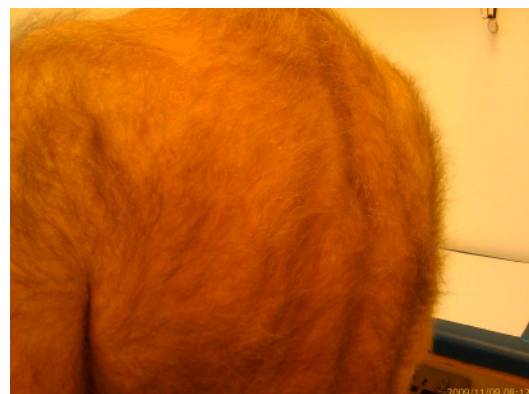
During a treatment of resting ECG and later stress ECG at an extremely haired patient, Doctor Diederich was impressed about the APPLICARD 2.0 ECG lead signal quality and the highly reproducible ECG documentation of the CARDIAX PC-ECG. Have a look to the enclosed photo documentation:

Picture 1 - Picture 2: Patient view

front

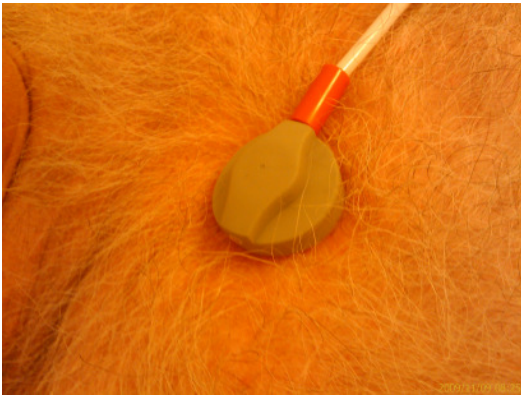


back

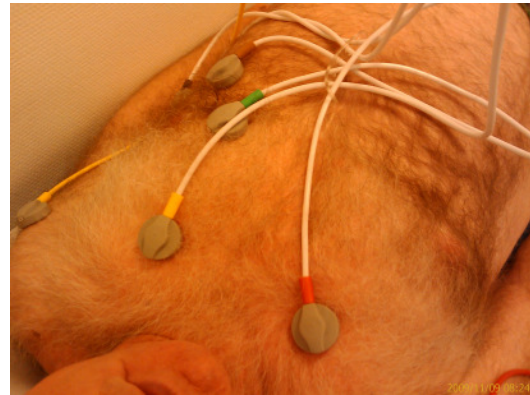


Picture 3 – Picture 4: Electrode positioning of APPLICARD 2.0 Ag/AgCl electrodes

red C1 = V1



Detail of ECG leads



Picture 5: CARDIAX PC-ECG, 12 channel ECG view on PC-Monitor



General practitioner's office:
Torsten Diederich, MD
Echardusstieg 6 a, D-21465 Wentorf
Schleswig-Holstein – GERMANY

We from MESA say Thank You to Doctor Diederich for this very interesting photo documentation and for his cooperation!