

flexible

USB

mobile

SpO₂

Ambulatory Blood Pressure Monitor

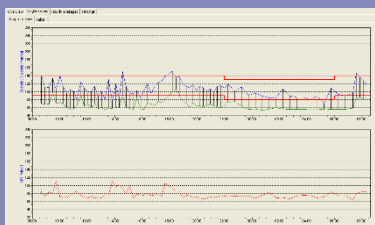
NIBP-UP

PHYSIO-PORT DUO
ABPM with SpO₂

PHYSIO-PORT DUO Ambulatory Blood Pressure Monitoring system with integrated SP=2 measurement

Visiting a doctor's practice can sometimes cause mental stress and sometimes is causing the patient's blood pressure to increase. Exact data during day and night are requested for differential diagnosis. The PHYSIO-PORT DUO oscillometric measuring method including inflationary measurement is eliminating the Artifact interferences and is supplying precise patient data up to 48 hours and 400 measurements. Different measuring programs for day and night are available. SpO2 trend is measured during the complete treatment.

As a place of patients well being and confidence, all kinds of stress caused by medical examination affecting your patient should be avoided. That's why the PHYSIO-PORT DUO is designed small and lightweight, fitting perfectly into the patient's privacy. Your patient will benefit from the quiet and ergonomically designed system not only during the night hours. The range of high quality accessories makes the product as convenient as possible and provides maximum flexibility and easy handling. The intuitive to handle PHYSIO-PORT-DUO Windows® software, thus the simple Recorder- programming makes the daily work with this system fast and safe



No.	Time	Systolic [mmHg]	Diastolic [mmHg]	HR [bpm]	SpO2 [%]
1	08:00	120	80	75	98
2	08:15	115	75	72	97
3	08:30	125	85	78	99
4	08:45	110	70	70	96
5	09:00	120	80	75	98
6	09:15	115	75	72	97
7	09:30	125	85	78	99
8	09:45	110	70	70	96
9	10:00	120	80	75	98
10	10:15	115	75	72	97
11	10:30	125	85	78	99
12	10:45	110	70	70	96
13	11:00	120	80	75	98
14	11:15	115	75	72	97
15	11:30	125	85	78	99
16	11:45	110	70	70	96
17	12:00	120	80	75	98
18	12:15	115	75	72	97
19	12:30	125	85	78	99
20	12:45	110	70	70	96
21	13:00	120	80	75	98
22	13:15	115	75	72	97
23	13:30	125	85	78	99
24	13:45	110	70	70	96
25	14:00	120	80	75	98
26	14:15	115	75	72	97
27	14:30	125	85	78	99
28	14:45	110	70	70	96
29	15:00	120	80	75	98
30	15:15	115	75	72	97
31	15:30	125	85	78	99
32	15:45	110	70	70	96
33	16:00	120	80	75	98
34	16:15	115	75	72	97
35	16:30	125	85	78	99
36	16:45	110	70	70	96
37	17:00	120	80	75	98
38	17:15	115	75	72	97
39	17:30	125	85	78	99
40	17:45	110	70	70	96
41	18:00	120	80	75	98
42	18:15	115	75	72	97
43	18:30	125	85	78	99
44	18:45	110	70	70	96
45	19:00	120	80	75	98
46	19:15	115	75	72	97
47	19:30	125	85	78	99
48	19:45	110	70	70	96
49	20:00	120	80	75	98
50	20:15	115	75	72	97
51	20:30	125	85	78	99
52	20:45	110	70	70	96
53	21:00	120	80	75	98
54	21:15	115	75	72	97
55	21:30	125	85	78	99
56	21:45	110	70	70	96
57	22:00	120	80	75	98
58	22:15	115	75	72	97
59	22:30	125	85	78	99
60	22:45	110	70	70	96
61	23:00	120	80	75	98
62	23:15	115	75	72	97
63	23:30	125	85	78	99
64	23:45	110	70	70	96
65	00:00	120	80	75	98
66	00:15	115	75	72	97
67	00:30	125	85	78	99
68	00:45	110	70	70	96
69	01:00	120	80	75	98
70	01:15	115	75	72	97
71	01:30	125	85	78	99
72	01:45	110	70	70	96
73	02:00	120	80	75	98
74	02:15	115	75	72	97
75	02:30	125	85	78	99
76	02:45	110	70	70	96
77	03:00	120	80	75	98
78	03:15	115	75	72	97
79	03:30	125	85	78	99
80	03:45	110	70	70	96
81	04:00	120	80	75	98
82	04:15	115	75	72	97
83	04:30	125	85	78	99
84	04:45	110	70	70	96
85	05:00	120	80	75	98
86	05:15	115	75	72	97
87	05:30	125	85	78	99
88	05:45	110	70	70	96
89	06:00	120	80	75	98
90	06:15	115	75	72	97
91	06:30	125	85	78	99
92	06:45	110	70	70	96
93	07:00	120	80	75	98
94	07:15	115	75	72	97
95	07:30	125	85	78	99
96	07:45	110	70	70	96
97	08:00	120	80	75	98
98	08:15	115	75	72	97
99	08:30	125	85	78	99
100	08:45	110	70	70	96

Large-scaled graphics and analytical functions are offered by the PHYSIO-PORT-WiINDOWS™ documentation Software, are optimizing the data processing and performing a profound evaluation of the results, reliable diagnosis and therapy control.

Additionally to the diagram of curves for Systole, Diastole, Heart Frequency and SpO2 all values and results detected can be documented numerically in form of tables. The USB interface connecting cable enables easy installation and access to EDP systems within the medical environment.

Measurement

Measuring method	Oscillometric
Measuring time	About 15 s
Data retention	Unlimited
Measurement-Interval	2 – 90 min, programmable
Capacity	400 measurements up to 48 hrs

SpO2 measurement

Measurement range	SpO2: 45 -100 % HF: 20 – 300 bpm
Accuracy	S0O2 +/- 2 % (70 – 100 %)
Measurement method	Chipox™ Technology
Detection rate	Interval: 1,2, 3 sec.
SpO2 sensor	Envitec Softtip™ Sensor

Measuring range

Systolic	60 – 260 mmHg
Diastolic	40 – 220 mmHg
Heart rate (HR)	35 – 240 beats per minute

Display

Patient-Display	LCD (measurement results, error codes)
Control panel	Keyboard (Start/Stop, Day/Night, Info)

NIBP-Cuff

Connection	Metal-Notch-Connector
Size	Different sizes available
Max. cuff pressure	300 mmHg maximal

Miscellaneous

Dimensions (h x w x d)	10,5 cm x 8,0 cm x 2,7 cm
Weight	190 g (with batteries)
Power supply	2 size AA alkaline batteries or 2 size AA NiMH rechargeable batteries (type Mingnon AA/1500mAh)

PC requirements

Operating system	WINDOWS™ 10	HDD	at least 500 GB
CPU	Intel Core i3 or Core i5	Interfaces	USB-Port
RAM	2 GB RAM		

Our products are up from development to manufacturing subject to a certified Quality Management System in accordance to the EN ISO 13485:2016 directives. All products are CE marked.



MESA Medizintechnik GmbH
Schärfmühlweg 4
D-83671 Benediktbeuern
GERMANY
Tel.: +49-8857 – 6918-0
Fax: +49-8857 – 6918-29
Email: info@mesamed.de
www.mesamed.de

The illustrations within this brochure show some optional features. All information represents the technical product status at date of printing. Changes due to technical advancements are subject to modifications and amendment. (Rev.A02-2020)